

# Fall Savings!

## U-Boat® Utility Carts

**U-Boat® Diamond Steel Decks**  
All welded steel with anti-skid diamond plate steel deck. Maneuvers easily on (2) 8" stationary center load wheels and (4) swivel end casters.

Dimensions: 16"W x 63"L x 61"H  
Capacity 2,000lbs **EXPRESS SHIP**

**Ultra U-Boat® Diamond Steel Deck**  
All welded steel with anti-skid diamond plate steel deck. Full wraparound bumper. Ezee Grip Handle®. Maneuvers easily on (2) 8" stationary center load wheels & (4) 4" swivel end casters.

Dimensions: 16"W x 60"L x 61"H  
Capacity: 2,000lbs  
**EXPRESS SHIP**



Model 300-60D-ULTRA



Model 300-60D/PU

### Hand Truck

Heavy duty steel pipe construction.  
Two 10" semi-pneumatic wheels.  
Dimensions: 20"W x 19"L x 47"H  
Capacity 800lbs **EXPRESS SHIP**



Model 508SP/RD

### Stocking & Marking Cart

Galvanized top shelf & tubular bottom shelf, bumpers.  
Dimensions: 20"W x 41"L x 31"H  
Capacity: 700lbs



Model WX-1000KA/BWM

### Folding U-Boat®

All welded Aluminum tubular construction. Handles fold down and lock into place. Maneuvers easily on (2) 6" stationary center load wheels and (4) 5" swivel end casters.  
Dimensions: 16"W x 63"L x 60 1/2"H  
Capacity 1,200lbs **EXPRESS SHIP**



Model AL-300-60-FH

### Stocking & Marking Cart

All welded aluminum channel cart, 5" polyurethane casters, two swivel and two rigid.  
Dimensions: 20"W x 42"L x 36"H  
Capacity: 1,200lb



Model ALUC-2-2036/36H

Model SC-L-1862-AL-MEI



### "L" Stock Cart

All welded aluminum tubular construction. One handed cart, maneuvers easily on (2) 6" stationary center load wheels and (4) 5" swivel end casters.

Dimensions: 18"W x 62"L x 62 7/8"H  
Capacity 1,200lbs **EXPRESS SHIP**

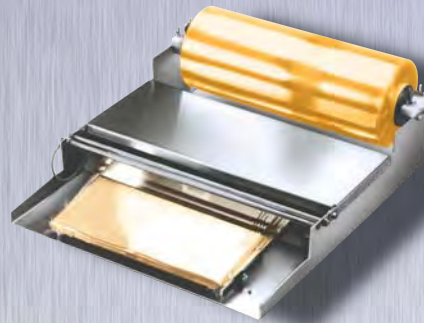
# Fall Savings!

## Film Wrappers



Model WHSS-1

Aluminum & Stainless Steel Construction. Teflon covered hot plate prevents sticking. Electrical loop rated @ 8 amps, 115 volts, Overall 750 watts. **EXPRESS SHIP**



## Triple Ingredient Bin



Model 148PIB

Sanitary polyethylene bins with clear plastic covers. Frame is constructed of all welded aluminum. 5" polyurethane swivel stem casters. Dimensions: 17"W x 31<sup>1/2</sup>"L x 28<sup>3/4</sup>"H  
Capacity per bin: 55lb flour or 75lb sugar

## Recycled Plastic Dunnage Racks

Solid one piece plastic construction will not chip corrode or rust. Capacity 2,200lbs. Prolongs product life by circulating air underneath. All are 12"H, black recycled plastic.



## Cooler Backroom Shelving



All welded aluminum tubular shelving.  
ALSCS-60-320 20"W x 60"Lx60"H



## Sani-Adjustable Shelving



Four aluminum tubular shelves, with four posts.

SAS-4-2048 20"W x 48"Lx68"H



Valid on all orders placed & shipped between  
10/1/2011 - 12/31/11 Minimum Order: \$200 Promo Code: R10.1.2011

# Universal Cart



## Stack and Nest Containers & Lids

### Model SN-2618 - Container

Polyethylene Lug

Dimensions: 19"W x 26"L x 11"H

### Model LID-2618 - Container Lid

Polyethylene Lug

Dimensions: 19"W x 27"L x 1"H



Constructed of rustproof, all welded aluminum. 7" between shelves. Maneuvers easily on (4) 5" heavy duty polyurethane swivel stem casters.

### Model: UNAL-8-WEG

Capacity 8 Shelves

Dimensions: 16"W x 32"L x 67"H



## Platter Cart



Constructed of rustproof, all welded aluminum. 6" between runners. Maneuvers easily on (4) 5" heavy duty polyurethane swivel stem casters.

### Model: AL-1210

Capacity 10 Platters

Dimensions: 15"W x 26"L x 67"H



## Platters

### Model WHP-1230

Constructed of injection molded, super hi-impact polystyrene

Dimensions: 12"W x 30"L x 3/4"H



AL-L-6

## Lug Carts



Constructed of rustproof, all welded aluminum. 10" between runners. Maneuvers easily on (4) 5" heavy duty polyurethane swivel stem casters. **EXPRESS SHIP**

Model	Cap.	Dimensions
AL-L-1	1 Lug	16"W x 25"L x 19"H
AL-L-2	2 Lug	16"W x 28"L x 33 <sup>1</sup> / <sub>2</sub> "H
AL-L-3	3 Lug	19"W x 27"L x 41"H
AL-L-6	6 Lug	19"W x 27"L x 71"H

**Lugs** (available in Gray or White)

Model WHPL-8GY Dimensions:

16"W x 25"L x 8"H



**Call Today 800.444.3595 or Fax 516.921.0538**

# Smallwares

## Wire Dividers

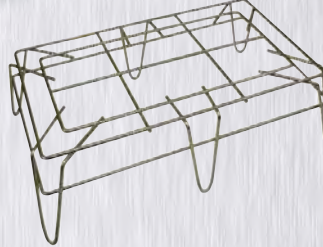
**Model DIV-2864-GR (Green)**

Dimensions: 4" side and 6" side, 28" long



**Model DIV-28128-EP (White)**

Dimensions: 8" side and 12" side, 28" long



## Display Stands

Single and Double constructed of heavy duty chrome plated steel wire.



Use multiple units the length of the aisle to increase impulse sales!

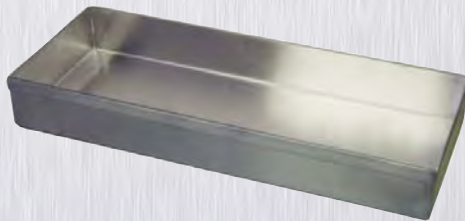
Model	Capacity	Dimensions
W-1014	500 lbs	10"W x 14"L x 8"H
W-2414	800 lbs	14"W x 24"L x 8"H

## Stainless Steel Display Trays

Custom Sizes available.

**Model WHSSBX-630/1H**

Dimensions: 6"W x 30"L x 1"H



**Model WHSSBX-830/1H**

Dimensions: 8"W x 30"L x 1"H



## Aluminum Trays

**Model AP-1826**

Dimensions: 18"W x 26"L x 1"H

Sold in Dozens



# Shopping Basket



LSB-1RD

## Model LSB-1

Polyethylene basket with steel plated wire handles. Colors red, blue, green, yellow or black.

Dimensions: 13"W x 19"L x 10"H

**EXPRESS SHIP**

# Shopping Basket on Wheels!

## Model LSBR-1

Heavy duty, durable, washable polyethylene plastic customer shopping baskets, makes shopping easier with wheels. Shopping baskets can be easily pulled by the pull-out handle.

Dimensions: 13"W x 24"L x 14"H

**EXPRESS SHIP**

Colors:  
Red, Blue & Green

Personalize your baskets with your logo.



**Model LSB-SGN Sign**

**Model LSB-Stand**



LSBR-1RD

Valid on all orders placed & shipped between  
10/1/2011 - 12/31/11 Minimum Order: \$200 Promo Code: R10.1.2011

# Fall Savings!

## Wall Mounted Receiving Desk



### Model RDWN-1

Steel desk with large working surface and storage compartments. Color Gray.

Dimensions: 22"W x 24"L x 12"H **EXPRESS SHIP**

## Lockers

All lockers open with door pulls and accept padlocks. Shipped fully assembled. Color: Beige.



### Model WL-618 3 Column- 18 Doors

Dimensions:  
36"W x 12"L x 78"H

### Model WL-66 1 Column - 6 Doors

Dimensions:  
12"W x 12"L x 78"H



### New Combination Master Locks Model MSLCK-1

Combination Lock with Black Face



## Fall Blow Out! Only While Supplies Last!

### Mobile Slant Merchandiser Model MM-1948

Great for produce, flowers or general merchandise. Constructed of all welded aluminum tubing. 3 Angled positions for displaying. Polyurethane casters (2) with brakes.

FOB TX - 10 Units. Dimensions: 19"W x 36"L x 78"H





**CALL 800.868.3742 FOR AN IMMEDIATE QUOTE!**



fabrication program.

Our extensive product line includes worktables, serving counters, sinks, floor troughs, dishstables, chef's units, ventilation and UDS systems, tray make-up, return conveyor systems and Win-Fab™ our modified stainless steel

**INSTALLATION SERVICES**

- ON-SITE FACTORY
- SOLID SURFACE & STONE TOPS
- CUSTOMIZED MILLWORK
- VENTILATION
- HEATING
- REFRIGERATION

**STAINLESS STEEL FABRICATION!**

**TOTAL CUSTOM**

**DESIGN AT IT'S BEST!**



**COMMERCIAL  
STAINLESS  
FABRICATORS**  
A WIN-HOLT COMPANY

**Fall Savings!**



141 Eileen Way  
Syosset, New York 11791

