



Pan Racks All Welded

Model AL-1820B

Heavy duty aluminum frame with welded angle slides, 3" spacing between runners. 5" polyurethane swivel stem casters.

Capacity of 20 - 18" x 26" sheet pans

Dimensions: 21"W x 26"L x 69¾"H



Pan Rack Reinforced Uprights

Model AL-1820B/XB

Heavy duty aluminum frame with welded angle slides, 3" spacing between runners. 5" polyurethane swivel stem casters.

Capacity of 20 - 18" x 26" sheet pans

Dimensions: 21"W x 26"L x 69¾"H

Economy Pan Racks Knock-Down

Economy Model ADE1820B/KDA

All-welded 1" aluminum construction, 3" spacing between runners. Capacity of 20 - 18" x 26" sheet pans. 5" swivel stem casters with polyolefin wheels.

Dimensions: 21"W x 26"L x 69"H

Economy Model ADE1812B/KDA

Dimensions: 21"W x 26"L x 69"H

Heavy Duty Pan Racks Knock-Down

Model AL-1820BKD/HD

All-welded 1" aluminum construction, 3" spacing between runners.

Capacity of 20 - 18" x 26" sheet pans. 5" swivel stem casters with polyurethane wheels.

Dimensions: 21"W x 26"L x 69"H



Model AL-1810/HKD

Dimensions: 20 ½"W x 26"L x 39 ¾"H

Universal Runner Model UARE1820BKD/HD

Dimensions to: 20 ½" x 26"L x 70" H

Runner Dimensions: 1 ¼" x 3 ¼" - 3" Spacing between

CALL NOW!

PHONE: 800-444-3595

FAX: 516-921-0538

USE CODE: FS.1.2012

www.winholt.com

SEASONAL SAVINGS

FREE FREIGHT

ON ALL ORDERS OF \$3,500+*



Economy Heater Proofer

Model NHPL-1836-ECO
Non-Insulated Pan
Capacity: 35 - 18" x 26"
Dimensions: 21 1/2"W x 31 1/4"L x 69 1/2"H



Standard Heater Proofer

Model NHPL-1836
Bumpers, Non- Insulated
Pan Capacity: 35 - 18" x 26"
Dimensions: 21 1/2"W x 31 1/4"L x 69 1/2"H



Insulated Heater Proofer

35% ENERGY SAVINGS!

Model INHPL-1836
Insulated, bumpers
Pan Capacity: 35 - 18" x 26"
Dimensions: 21 1/2"W x 32"L x 66 3/4"H

Universal Runner Heater Proofer

Model NHPL-1825-UN
Non- Insulated Unit. Removable chrome pan slides for variable spacing on 2" centers, field reversible door for right or left hanging. 25 pan slides hold a variety of panconfigurations from sheet pans to steam table pans.
Dimensions: 24"W x 32"L x 70"H



Heater Proofers

ALL ARE NSF  

Air baffle and circulating air blower provide even heat distribution. Clear Lexan Door. Easy dual proof/heat control: "Proof" mode: Humidity from 30% to 95%. Temperatures up to 115°F (46°C) "Heat" mode: Nominal Temperatures up to 185°(85°C) Electrical: 120 VAC-60 Hz., 15 amps - 1500 Watts - Standard 110 outlet.

NEW!

High Performance Heater Proofer



- Higher wattage unit has quicker recovery time.
- Proofing/Heating module with dual elements is 120VAC, 20 AMP, 60 Cycle and 1800 watts.
- Easy dual proof/heat control:
“Proof mode” from 30% to 95%, temperatures up to 145F (46C) to 110F (42C).
“Heat” Mode: Nominal temperatures up to 180F (82C)

Model NHPL-1818

Pan Capacity: 18 Pan Slides hold a variety of pan configurations.

Runners on 3” centers

Dimensions: 24 1/4” W x 31 3/4” D x 70” H

Under Counter Heater Proofer

Model NHPL-1810/HH
Non-Insulated with Poly top
workstation, bumpers.

Pan Capacity:

10 - 18” x 26”

Dimensions:

21 1/2”W x 32” L x 30 3/8”H



Enclosed Mobile Cabinet

Model EC1840-C

All welded, reinforced, non-insulated aluminum. Double pan construction with reinforced braces, 1 1/2” spacing between runners. Easily maneuverable on four 5” polyurethane, swivel plate, double ball race casters.

40 pan capacity 18” x 26”.

Dimensions: 21”W x 27”L x 68”H



Energy Tip

Always remember to shut your heater proofer off! The U.S. Department of Energy reports that holding cabinets are frequently left on overnight. Don't waste energy by heating empty space – implement a shutdown schedule and make sure your cabinets are part of it. An un-insulated holding cabinet left idling for eight hours every night could wind up costing you around \$500 per year.

To learn more visit: www.energystar.com

CALL NOW!

PHONE: 800-444-3595

FAX: 516-921-0538

USE CODE: FS.1.2012

FREE FREIGHT

on all orders of \$3,500+*



Sani-Adjustable Shelving

Model SAS-4-2048

Four aluminum tubular shelves, with four posts.
Dimensions: 20"W x 48"Lx68"H



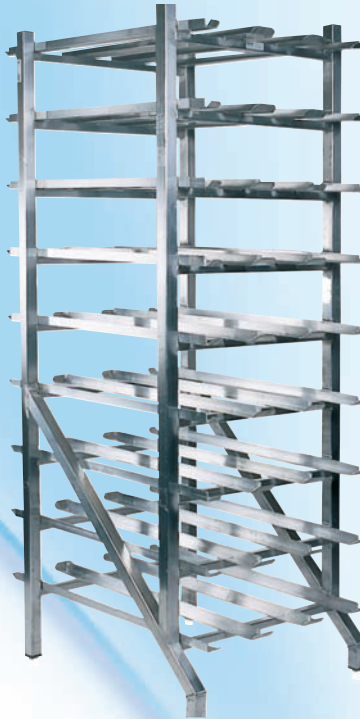
Can Racks

Vertical uprights and cross braces are constructed of 1½" aluminum tubing. Mobile units have two 5" locking swivel and two 5" rigid polyurethane plate casters.



Model CR-162

Holds 162 #10 cans, 216 #5 cans.
Dimensions: 25¼"W x 35"D x 71"H



Model CR-162M

Mobile unit Holds 162 #10 cans, 216 #5 cans.
Dimensions: 27 ½"W x 35"D x 76"H



Keg Racks

All aluminum construction. Adjustable shelves accommodate ¼ barrel and ½ barrel sizes.

Solid Shelf- Aluminum

- BKR-54/E 12" W x 36"L 150lb Capacity
- BKR-60/E 12" W x 48"L 125lb Capacity
- BKR-80/E 12" W x 60"L 100lb Capacity
- BKR-93/E 12" W x 60"L 100lb Capacity

Plastic Dunnage Racks

Economy Tubular all welded 1½" x 1½" rust proof aluminum tubing. Capacity 1,500lbs.
Prolongs product life by circulating air underneath. All 12"H



PLSQ-3-1222 20"W x 36"L

PLSQ-4-1222 24"W x 36"L

PLSQ-5-1222 20"W x 48"L

Dunnage Racks

Economy Tubular all welded 1½" x 1½" rust proof aluminum tubing. Capacity 1,500lbs. Prolongs product life by circulating air underneath. All 12"H



DASQ-3-1220 20"W x 36"L

DASQ-3-1224 24"W x 36"L

DASQ-4-1220 20"W x 48"L

DASQ-4-1224 24"W x 48"L

DASQ-5-1220 20"W x 60"L

DASQ-5-1224 24"W x 60"L



Ingredient Bin Triple

Model 148PIB

Bins are one-piece, sanitary polyethylene with clear plastic covers. Frame is constructed of all welded aluminum. 5" polyurethane swivel stem casters. Dimensions: 17"W x 31 ½"L x 28 ¾"H
Capacity per bin: 55lb flour or 75lb sugar



Stainless Steel Table w/ undershelf



Model DTS-2430
All 16 gauge stainless steel top shelf and legs
Dimensions: 24"W x 30"L

FREE FREIGHT
on all orders of
\$3,500+*



Wall Shelves *Knock-down*

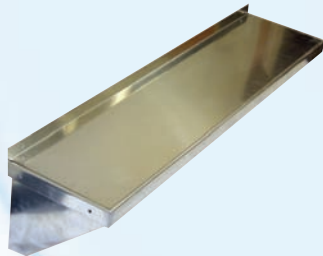
Solid Shelf- Aluminum

ALWMS1236 12" W x 36"L 150lb Capacity

ALWMS1248 12" W x 48"L 125lb Capacity

ALWMS1260 12" W x 60"L 100lb Capacity

Wall Mounted knock-down solid-shelf Aluminum shelving adds extra storage where ever a wall exists. Aluminum shelves feature a marine edge to help prevent spills from coming over the edges. Easy to assemble and install.



Aluminum Shelf
ALWMS series

Solid Shelf-Stainless Steel

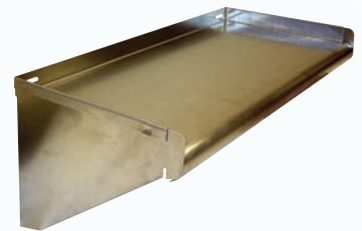
SSWMS122/KD 12"W x 24"L

SSWMS123/KD 12"W x 36"L

SSWMS124/KD 12"W x 48"L

SSWMS125/KD 12"W x 60"L

Wall mounted knock-down stainless steel shelving, has a 1 1/2" sanitary rolled rim and a 1 1/4" turned up edge on rear and shelf sides. Shelf height 9 1/2". Constructed of 18 gauge polished stainless steel. Easy to assemble and install.



Stainless Steel
SSWMS series



Lockers

All lockers open with door pulls and accept padlocks. Shipped fully assembled. Color: Beige.



Combination Lock
Model MSLCK-1



Model WL-618

3 Column- 18 Doors

Dimensions:

36"W x 12"L x 78"H

Model WL-66

1 Column - 6 Doors

Dimensions:

12"W x 12"L x 78"H

Hand Truck

Model 508SP/RD

Heavy duty steel pipe construction. Two 10" semi-pneumatic wheels. Dimensions: 20"W x 19"L x 47"H Capacity 800lbs





Rack Covers

Model SRC-58/3Z

Clear Vinyl

Dimensions: 23"W x 28"L x 61"H



Freezer Rack Cover

Model SRC-58FC/3Z

Blue Vinyl with Clear Panel

Temps to -20°F

Dimensions: 23"W x 28"L x 61"H

Smallwares



Lug Lid

Model WHPL-8LID-GY

Gray or White

Lug

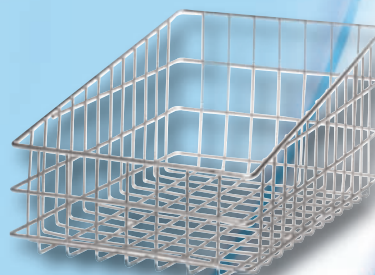
Model WHPL-8GY

Gray or White

Bread Baskets

Model WSBB118

Gray or White



Trays

Model WHP-1826WH

Dimensions: 18"W x 26"L x 1"H

Sold in Dozens



Bagel Board

Model BB1826

Dimensions:

18"W x 26"L x 5/16"H

Bagel Scoop

Model WBS-1432

Dimensions:

14" W x 32"L



Pizza Dough Boxes

Model PD-18263

Dimensions: 18"W x 26"L x 3"H





**COMMERCIAL
STAINLESS
FABRICATORS**
A WIN-HOLT COMPANY

TOTAL CUSTOM STAINLESS STEEL FABRICATION!



- REFRIGERATION
- HEATING
- VENTILATION
- CUSTOMIZED MILLWORK
- SOLID SURFACE & STONE TOPS
- INSTALLATION SERVICES

**FOR QUOTES ON
CUSTOM STAINLESS FABRICATION
PLEASE CALL 800.868.3742**



1035 Cobb Industrial Drive • Marietta, GA 30066 • www.cfin.net • www.winholt.com
NEW YORK • PENNSYLVANIA • GEORGIA • TEXAS • CALIFORNIA • CHINA • INDIA

WELCOME

2012

WITH



**SEASONAL
SAVINGS**



141 Eileen Way
Syosset, New York 11791

