

FALL SAVINGS



NEW

High Performance Heater Proofer

Higher wattage unit has quicker recovery time. Proofing/Heating module with dual elements is 120VAC, 15 AMP, 60 Cycle and 1800 watts. Easy dual proof/heat control: "Proof mode" from 30% to 95%, temperatures up to 145F (62C) to 110F (43C). "Heat" Mode: Nominal temperatures up to 180F (82C)

Model NHPL-1818
Pan Capacity: 18 Pan Slides hold a variety of pan configurations.
Runners on 3" centers
Dimensions: 24 1/4" W x 31 3/4" D x 70" H



CALL NOW!
PHONE: 800-444-3595
FAX: 516-921-0538
USE CODE: FS10.1.2011

Universal Runner Heater Proofer

Model NHPL-1825-UN
Non- Insulated Unit. Removable chrome pan slides for variable spacing, field reversible door for right or left hanging. 25 pan slides hold a variety of pan configurations from sheet pans to steam table pans.
Dimensions: 24"W x 32"L x 70"H



Insulated Heater Proofer

35% ENERGY SAVINGS!

Model INHPL-1836
Insulated, bumpers
Pan Capacity: 35 - 18" x 26"
Dimensions: 21 1/2"W x 32"L x 66 3/4"H



Heater Proofer



Air baffle and circulating air blower provide even heat distribution. Clear Lexan Door. Easy dual proof/heat control: "Proof" mode: Humidity from 30% to 95%. Temperatures up to 115°F (46°C) "Heat" mode: Nominal Temperatures up to 185°(85°C) Electrical: 120 VAC-60 Hz., 14 amps - Standard 110 outlet.

www.winholt.com

Economy Heater Proofer



Model NHPL-1836-ECO
 Non-Insulated Pan Capacity: 35 - 18" x 26"
 Dimensions: 21^{1/2}"W x 31^{1/4}"L x 69^{1/2}"H



Standard Heater Proofer

Model NHPL-1836-STD
 Bumpers, Non- Insulated
 Pan Capacity: 35 - 18" x 26"
 Dimensions: 21^{1/2}"W x 31^{1/4}"L x 69^{1/2}"H



Under Counter Heater Proofer

Model NHPL-1810/HH
 Non-Insulated with Poly top workstation, bumpers.
 Pan Capacity:
 10 - 18" x 26"
 Dimensions:
 21^{1/2}"W x 32" L x 30^{2/3}"H



Enclosed Mobile Cabinet

Model EC1840-C
 All welded, reinforced, non-insulated aluminum. Double pan construction with reinforced braces, 1^{1/2}" spacing between runners. Easily maneuverable on four 5" polyurethane, swivel plate, double ball race casters.
 40 pan capacity 18" x 26".
 Dimensions: 21"W x 27"L x 68"H



Enclosed Mobile Cabinet
 Model EC-1840-CTLPURC
 Reinforced undercarriage and frame.

Ingredient Bin Triple

Model 148PIB
 Bins are one-piece, sanitary polyethylene with clear plastic covers. Frame is constructed of all welded aluminum. 5" polyurethane swivel stem casters. Dimensions: 17"W x 31^{1/2}"L x 28^{3/4}"H
 Capacity per bin: 55lb flour or 75lb sugar



Lug Carts

Constructed of rust-proof, all welded aluminum. Holds 1 Lug. Maneuvers easily on (4) 5" heavy duty polyurethane swivel stem casters.



Model	Cap.	Dimensions
AL-L-1	1 Lug	16"W x 25"L x 19"H

See Smallwares for Lugs

Pan Racks All Welded

Model AL-1820B

Heavy duty aluminum frame with welded angle slides, 3" spacing between runners. 5" polyurethane swivel stem casters.

Capacity of 20 - 18" x 26" sheet pans

Dimensions: 21"W x 26"L x 69¾"H



Pan Racks Knock-down

Heavy Duty



Model AL-1820BKD/HD

All-welded 1" aluminum construction, 3" spacing between runners. Capacity of 20 - 18" x 26" sheet pans. 5" swivel stem casters with polyurethane wheels.

Dimensions: 21"W x 26"L x 69"H



Model AL-1810H/SSTOP

Half height pan rack with SS solid top. Capacity of 10 - 18" x 26" sheet pans. 5" swivel stem casters with polyurethane wheels.

Dimensions: 21"W x 26"L x 38"H



Pan Racks Knock-down

Economy Model ADE1820B/KDA

All-welded 1" aluminum construction, 3" spacing between runners. Capacity of 20 - 18" x 26" sheet pans. 5" swivel stem casters with polyolefin wheels.

Dimensions: 21"W x 26"L x 69"H

Rack Covers

Model SRC-58/3Z

Clear Vinyl

Dimensions: 23"W x 28"L x 61"H



Can Racks

Vertical uprights and cross braces are constructed of 1½" aluminum tubing. Mobile units have two 5" locking swivel and two 5" rigid polyurethane plate casters.



Model CR-162

Holds 162 #10 cans, 216 #5 cans.
Dimensions: 25^{1/4}"W x 35"D x 71"H



Model CR-162M

Mobile unit Holds 162 #10 cans, 216 #5 cans.
Dimensions: 27^{1/2}"W x 35"D x 76"H



Model CR-72SS

Stainless steel top/Mobile unit
Holds 72 #10 cans, 96 #5 cans.
Dimensions: 27^{1/2}"W x 35"D x 40"H



Insert Racks

Model AL-1816-IR-KD
Dimensions: 20^{3/8}" W x 24"L x 51"H

Knock-down, constructed of rustproof, all welded aluminum with 1-1/2" wide angle slides. Designed to hold 18" x 26" & 14" x 18" trays. Ships knock-down.



Keg Racks

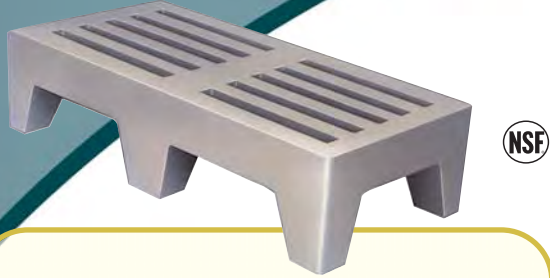
Solid Shelf- Aluminum 

- BKR-54/E 12" W x 36"L 150lb Capacity
- BKR-60/E 12" W x 48"L 125lb Capacity
- BKR-80/E 12" W x 60"L 100lb Capacity
- BKR-93/E 12" W x 60"L 100lb Capacity



Plastic Dunnage Racks

Economy Tubular all welded 1½" x 1½" rust proof aluminum tubing. Capacity 1,500lbs. Prolongs product life by circulating air underneath. All 12"H



PLSQ-3-1222 20"W x 36"L

PLSQ-4-1222 24"W x 36"L

PLSQ-5-1222 20"W x 48"L

Economy Dunnage Racks

Great for storing dish machine chemical off the floor, health code complaint. Steel plated wire.



Model W-1014 Single
Dimensions: 10"W x 14"L x 8"H
Capacity 500lbs

Model W-2414 Double Wide
Dimensions: 14"W x 24"L x 8"H
Capacity 850lbs

Dunnage Racks

Economy Tubular all welded 1½" x 1½" rust proof aluminum tubing. Capacity 1,500lbs. Prolongs product life by circulating air underneath. All 12"H



DASQ-3-1220 20"W x 36"L

DASQ-3-1224 24"W x 36"L

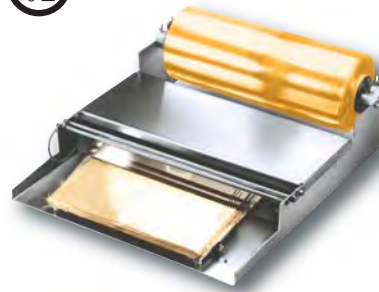
DASQ-4-1220 20"W x 48"L

DASQ-4-1224 24"W x 48"L

DASQ-5-1220 20"W x 60"L

DASQ-5-1224 24"W x 60"L

Film Wrappers



Model WHSS-1
Holds 1 roll. Aluminum & stainless steel construction. Electrical loop rated @ 8 amps, 115 volts, overall 750 watts.
Dimensions:
22¼"W x 24"L x 5"H



CALL NOW!
PHONE: 800-444-3595
FAX: 516-921-0538
USE CODE: FS10.1.2011

Pan Carriers



Model IFPC-11-GY (Gray)

Dimensions: 27½"W x 35"D x 40"H

Model IFPC-11-BK (Black)

Dimensions: 27½"W x 35"D x 40"H

Model IFPC-Dolly



Model SSUC-2-1832/1H/45H

2 Shelf cart - Med. Duty

Dimensions: 27½"W x 35"D x 40"H

Model SSUC-3-1832/1H/45H

2 Shelf cart - Med. Duty

Dimensions: 27½"W x 35"D x 40"H

Wall Shelves *Knock-down*

Solid Shelf- Aluminum

ALWMS1236 12" W x 36"L 150lb Capacity

ALWMS1248 12" W x 48"L 125lb Capacity

ALWMS1260 12" W x 60"L 100lb Capacity

Solid Shelf-Stainless Steel

SSWMS122/KD 12"W x 24"L

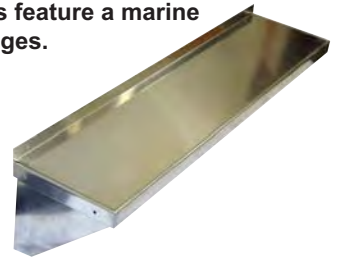
SSWMS123/KD 12"W x 36"L

SSWMS124/KD 12"W x 48"L

SSWMS125/KD 12"W x 60"L

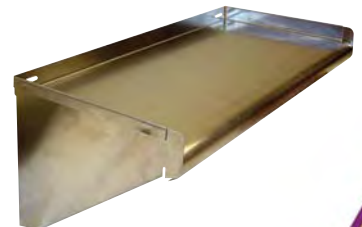
Wall Mounted knock-down solid-shelf Aluminum shelving adds extra storage where ever a wall exists. Aluminum shelves feature a marine edge to help prevent spills from coming over the edges. Easy to assemble and Install.

Aluminum Shelf
ALWMS series



Wall mounted knock-down stainless steel shelving, has a 1½" sanitary rolled rim and a 1¼" turned up edge on rear and shelf sides. Shelf height 9½". Constructed of 18 gauge polished stainless steel. Easy to assemble and install.

Stainless Steel
SSWMS series



Stainless Steel Utility Carts

Ice Caddy & Scoop

Model IC-S
Plastic Ice Scoop
Dimensions: 4^{3/4}"W x 11"L x 4^{3/8}"H

Model IC-125BK
Dimensions: 24"W x 31"L x 29"H
Unit available in BLACK

Polyethylene construction. Thick polyurethane foam insulation, holds up to 125 lbs of ice, faucet allows for drainage.



Smallwares

Lug Lid
Model WHPL-8LID-GY
Gray or White



Lug
Model WHPL-GY
Gray or White



Bread Baskets
Model WSBB118
Gray or White

Trays
Model WHP-1826WH
Dimensions: 18"W x 26"L x 1"H
Sold in Dozens



Bagel Board
Model BB1826
Dimensions:
18"W x 26"L x 5/16"H



Bagel Scoop
Model WBS-1432
Dimensions:
14" W x 32"L



Lockers

All lockers open with door pulls and accept padlocks.
Shipped fully assembled.
Color: Beige.



Combination Lock
Model MSLCK-1



Model WL-618
3 Column- 18 Doors
Dimensions:
36"W x 12"L x 78"H

Model WL-66
1 Column - 6 Doors
Dimensions:
12"W x 12"L x 78"H

Pizza Dough Boxes
Model PD-18263
Dimensions: 18"W x 26"L x 3"H





141 Eileen Way
Syosset, New York 11791



**COMMERCIAL
STAINLESS
FABRICATORS**
A WIN-HOLT COMPANY

DESIGN AT IT'S BEST!

TOTAL CUSTOM

STAINLESS STEEL FABRICATION!

- REFRIGERATION
- HEATING
- VENTILATION
- CUSTOMIZED MILLWORK
- SOLID SURFACE & STONE TOPS
- ON-SITE FACTORY
INSTALLATION SERVICES



Our extensive product line includes worktables, serving counters, sinks, floor troughs, dishtables, chef's units, ventilation and UDS systems, tray make-up, return conveyor systems and Win-Fab™ our modified stainless steel fabrication program.



CALL 800.868.3742 FOR AN IMMEDIATE QUOTE!



1035 Cobb Industrial Drive • Marietta, GA 30066 • www.csfinc.net • www.winholt.com

NEW YORK • PENNSYLVANIA • GEORGIA • TEXAS • CALIFORNIA • MEXICO • CHINA • INDIA